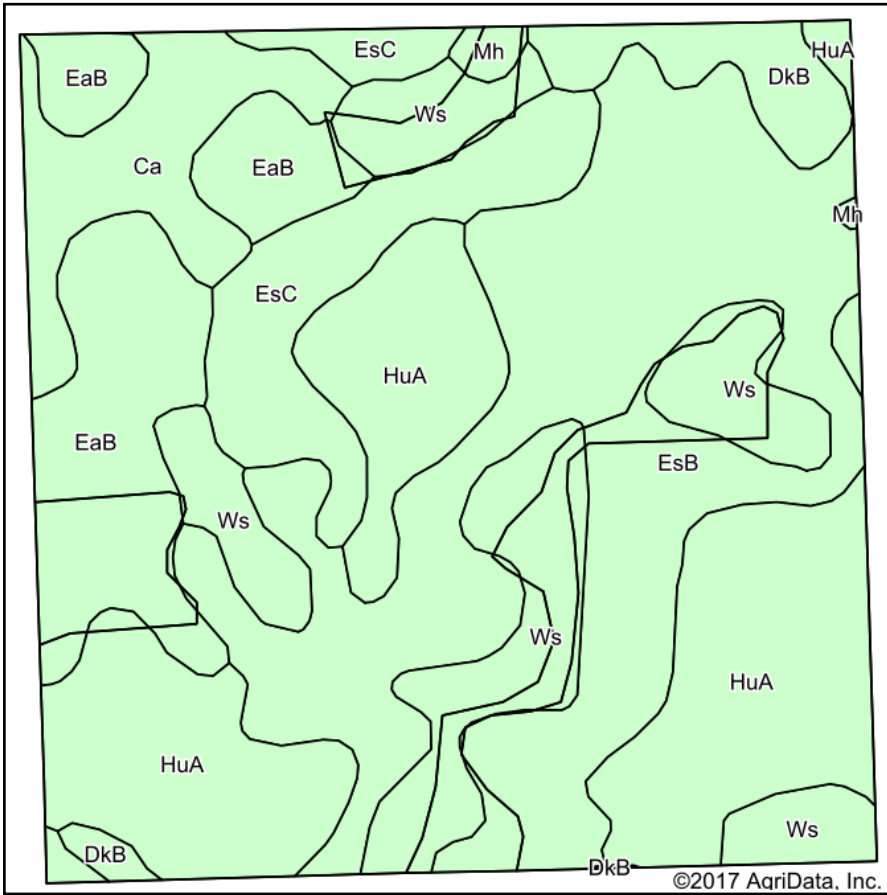
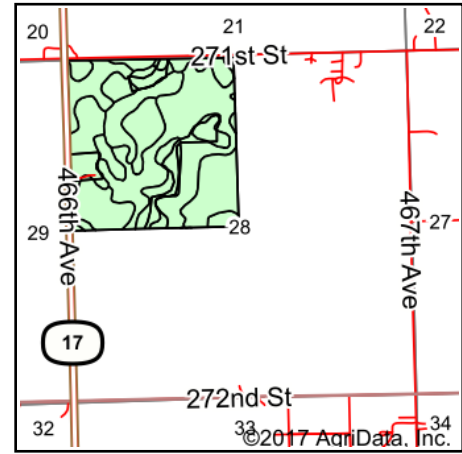


Soils Map



Soils data provided by USDA and NRCS.



State: **South Dakota**
 County: **Lincoln**
 Location: **28-100N-51W**
 Township: **Delapre**
 Acres: **154.26**
 Date: **12/28/2017**



Maps Provided By:



© AgriData, Inc. 2017

www.AgriDataInc.com



Area Symbol: SD083, Soil Area Version: 19

Code	Soil Description	Acres	Percent of field	Non-Irr Class *c	Productivity Index	Alfalfa hay	Barley	Corn	Soybeans	Spring wheat
EsB	Egan-Shindler complex, 2 to 6 percent slopes	47.67	30.9%	Ile	77	4.2	46	81	29	33
HuA	Huntimer silty clay loam, 0 to 2 percent slopes	37.07	24.0%	Iw	90	4.5	52	94	35	37
Ws	Worthing silty clay loam, 0 to 1 percent slopes	21.64	14.0%	Vw	30					
EaB	Egan silty clay loam, 3 to 6 percent slopes	18.84	12.2%	Ile	82	4.5	50	90	34	35
EsC	Egan-Shindler complex, 6 to 9 percent slopes	13.26	8.6%	IIIle	65	3.8	40	68	24	28
Ca	Chancellor-Tetonka complex, 0 to 2 percent slopes	9.55	6.2%	IIw	75					
DkB	Delmont and Talmo soils, 2 to 9 percent slopes	5.40	3.5%	IVs	24	2.2	20	19	7	13
Mh	Baltic silty clay loam, ponded	0.83	0.5%	VIIIw	13		1	6	2	1
Weighted Average					70.8	3.3	37	65.2	23.8	26.2

*c: Using Capabilities Class Dominant Condition Aggregation Method

Soils data provided by USDA and NRCS.