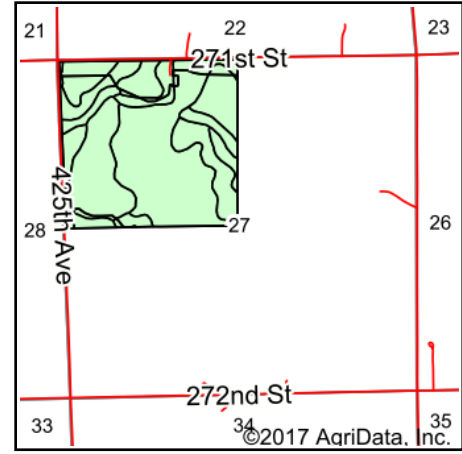
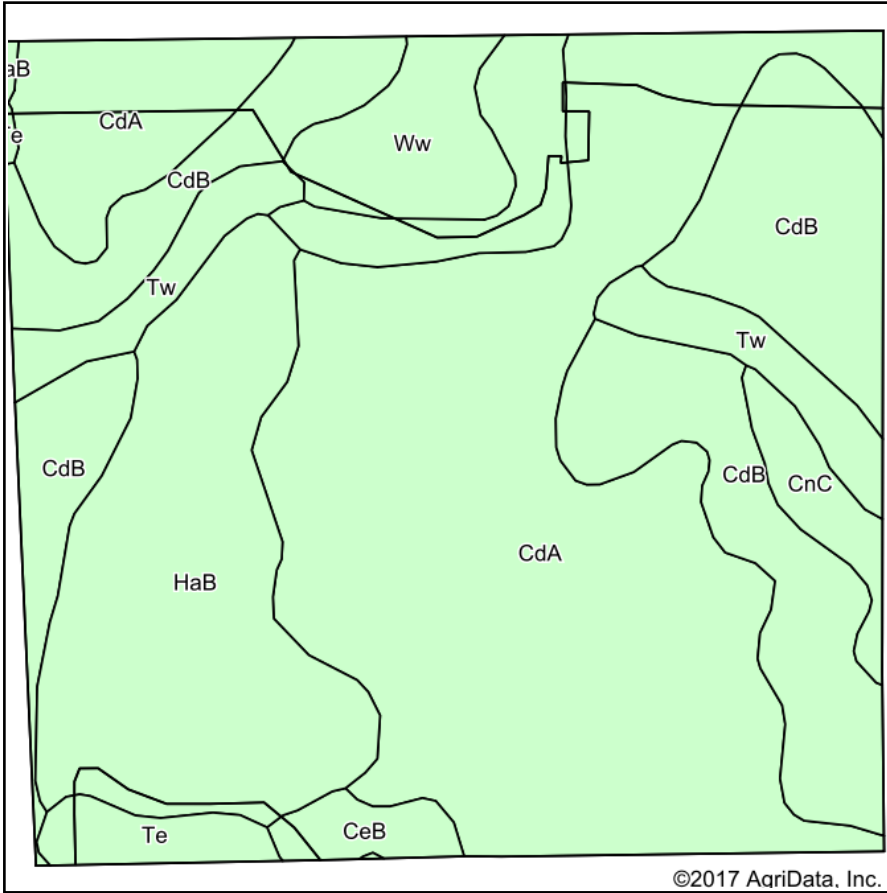


Soils Map

TRACT 3



State: **South Dakota**
 County: **Hutchinson**
 Location: **27-100N-58W**
 Township: **Clayton**
 Acres: **163.69**
 Date: **12/11/2017**



Maps Provided By:



© AgriData, Inc. 2017

www.AgriDataInc.com



Area Symbol: SD602, Soil Area Version: 19

Cod e	Soil Description	Acres	Percent of field	Non-Irr Class *c	Irr Class *c	Productivity Index	Alfalfa hay	Alfalfa hay Irrigated	Corn	Corn Irrigated	Soybeans	Soybeans Irrigated	Spring wheat
CdA	Clarno-Bonilla loams, 0 to 2 percent slopes	70.90	43.3%	IIc		88							
CdB	Clarno loam, 2 to 6 percent slopes	42.29	25.8%	IIe		82							
HaB	Hand loam, 3 to 6 percent slopes	27.92	17.1%	IIe		79	3.1		75				27
Tw	Tetonka and Whitewood silty clay loams	7.69	4.7%	IIw		74							
Ww	Worthing silty clay loam, 0 to 1 percent slopes	6.42	3.9%	Vw		30							
CnC	Clarno-Ethan-Bonilla loams, 2 to 9 percent slopes	3.21	2.0%	IIIe		69							
Te	Tetonka silt loam, 0 to 1 percent slopes	2.94	1.8%	IVw		56							
CeB	Clarno-Davison loams, 2 to 4 percent slopes	2.32	1.4%	IIe	IIIe	79	3.1	5.2	72	125	27	32	
Weighted Average						80.9	0.6	0.1	13.8	1.8	0.4	0.5	4.6

*c: Using Capabilities Class Dominant Condition Aggregation Method

Soils data provided by USDA and NRCS.