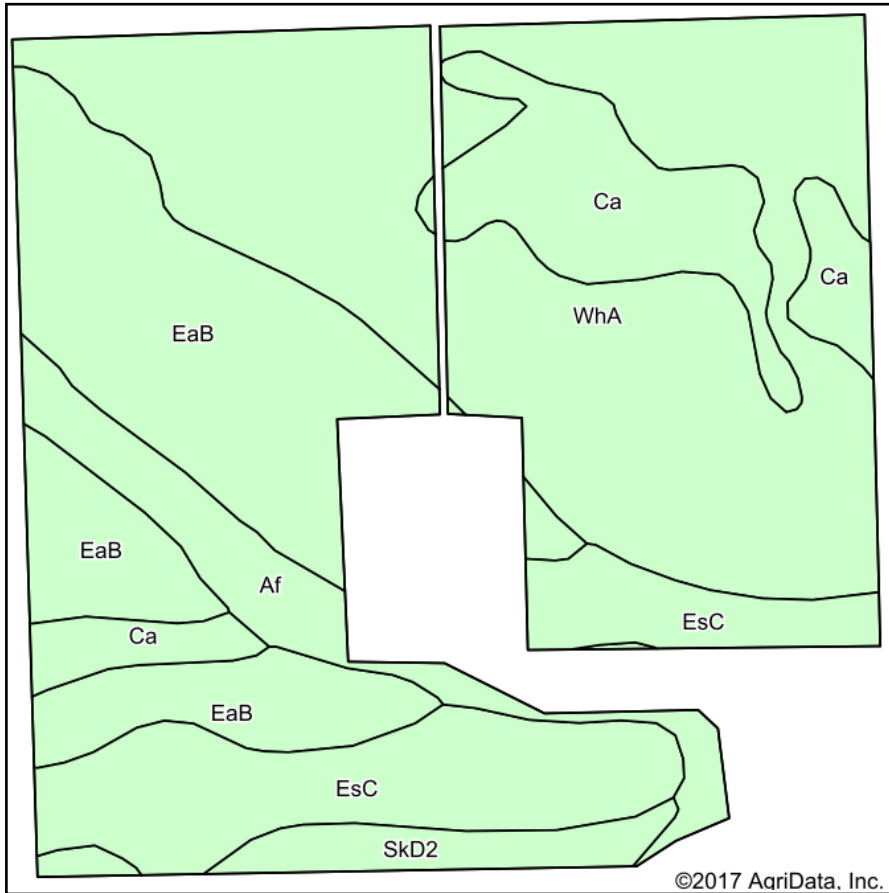
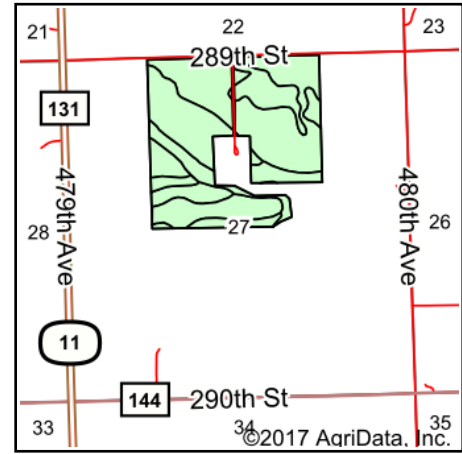


# Soils Map



Soils data provided by USDA and NRCS.

©2017 AgriData, Inc.



State: **South Dakota**  
 County: **Lincoln**  
 Location: **27-97N-49W**  
 Township: **Highland**  
 Acres: **136.65**  
 Date: **11/17/2017**



Maps Provided By:



© AgriData, Inc. 2017

www.AgriDataInc.com



## Area Symbol: SD083, Soil Area Version: 18

Code	Soil Description	Acres	Percent of field	Non-Irr Class *c	Productivity Index	Alfalfa hay	Barley	Corn	Soybeans	Spring wheat
WhA	Wentworth-Chancellor silty clay loams, 0 to 2 percent slopes	54.92	40.2%	Iw	88	4.1	51	98	37	36
EaB	Egan silty clay loam, 3 to 6 percent slopes	33.48	24.5%	Ile	82	4.5	50	90	34	35
EsC	Egan-Shindler complex, 6 to 9 percent slopes	20.14	14.7%	IIle	65	3.8	40	68	24	28
Ca	Chancellor-Tetonka complex, 0 to 2 percent slopes	15.49	11.3%	IIw	75					
Af	Alcester silty clay loam, channeled	8.54	6.2%	VIw	38	2.2	14	36	13	10
SkD2	Shindler-Egan complex, 9 to 15 percent slopes, eroded	4.08	3.0%	VIe	46	3.1	28	44	15	20
<b>Weighted Average</b>					<b>77.3</b>	<b>3.5</b>	<b>40.4</b>	<b>75</b>	<b>28</b>	<b>28.4</b>

\*c: Using Capabilities Class Dominant Condition Aggregation Method

Soils data provided by USDA and NRCS.