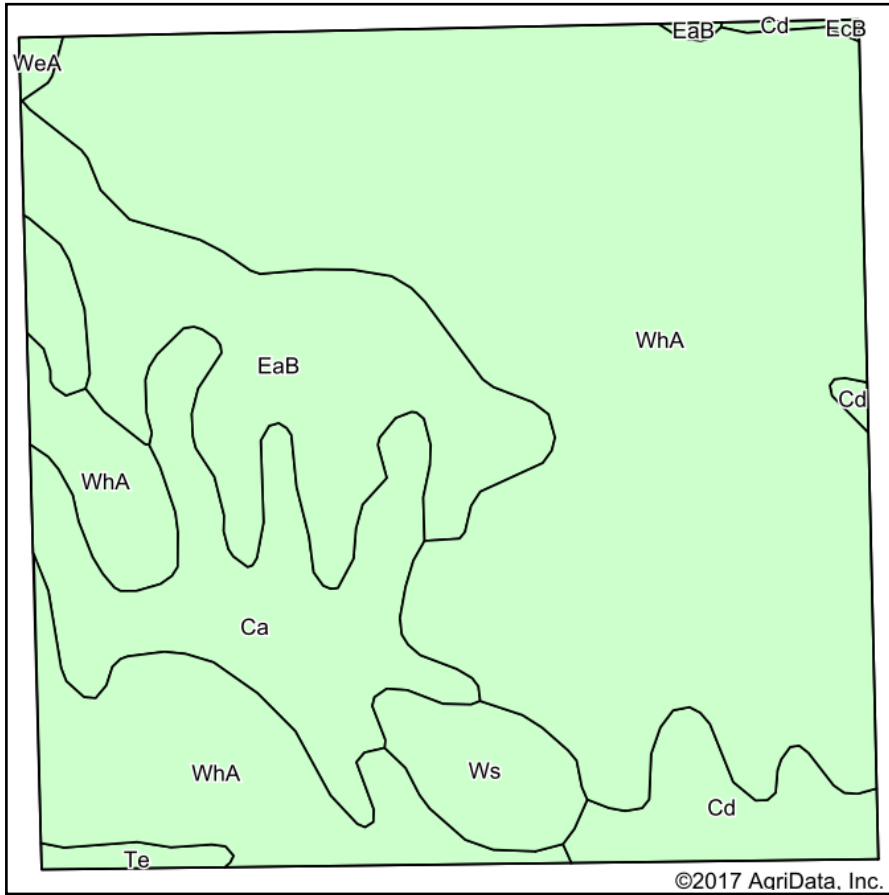
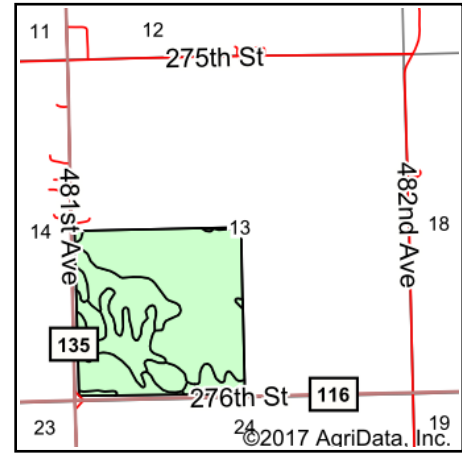


Soils Map



Soils data provided by USDA and NRCS.



State: **South Dakota**
 County: **Lincoln**
 Location: **13-99N-49W**
 Township: **Dayton**
 Acres: **153.75**
 Date: **12/28/2017**



Maps Provided By:



© AgriData, Inc. 2017

www.AgriDataInc.com



Area Symbol: SD083, Soil Area Version: 19

Code	Soil Description	Acres	Percent of field	Non-Irr Class *c	Productivity Index	Alfalfa hay	Barley	Corn	Soybeans	Spring wheat
WhA	Wentworth-Chancellor silty clay loams, 0 to 2 percent slopes	101.17	65.8%	Iw	88	4.1	51	98	37	36
EaB	Egan silty clay loam, 3 to 6 percent slopes	20.69	13.5%	Ile	82	4.5	50	90	34	35
Ca	Chancellor-Tetonka complex, 0 to 2 percent slopes	19.01	12.4%	IIw	75					
Cd	Chancellor-Viborg silty clay loams	6.41	4.2%	IIw	87	3.7	47	94	35	33
Ws	Worthing silty clay loam, 0 to 1 percent slopes	4.98	3.2%	Vw	30					
Te	Tetonka silt loam, 0 to 2 percent slopes, frequently ponded	0.96	0.6%	IVw	59					
WeA	Wentworth silty clay loam, 0 to 2 percent slopes	0.43	0.3%	I	93					
EcB	Egan-Chancellor silty clay loams, 0 to 4 percent slopes	0.10	0.1%	Ile	83	3.8	46	89	33	33
Weighted Average					83.5	3.5	42.3	80.6	30.4	29.8

*c: Using Capabilities Class Dominant Condition Aggregation Method

Soils data provided by USDA and NRCS.