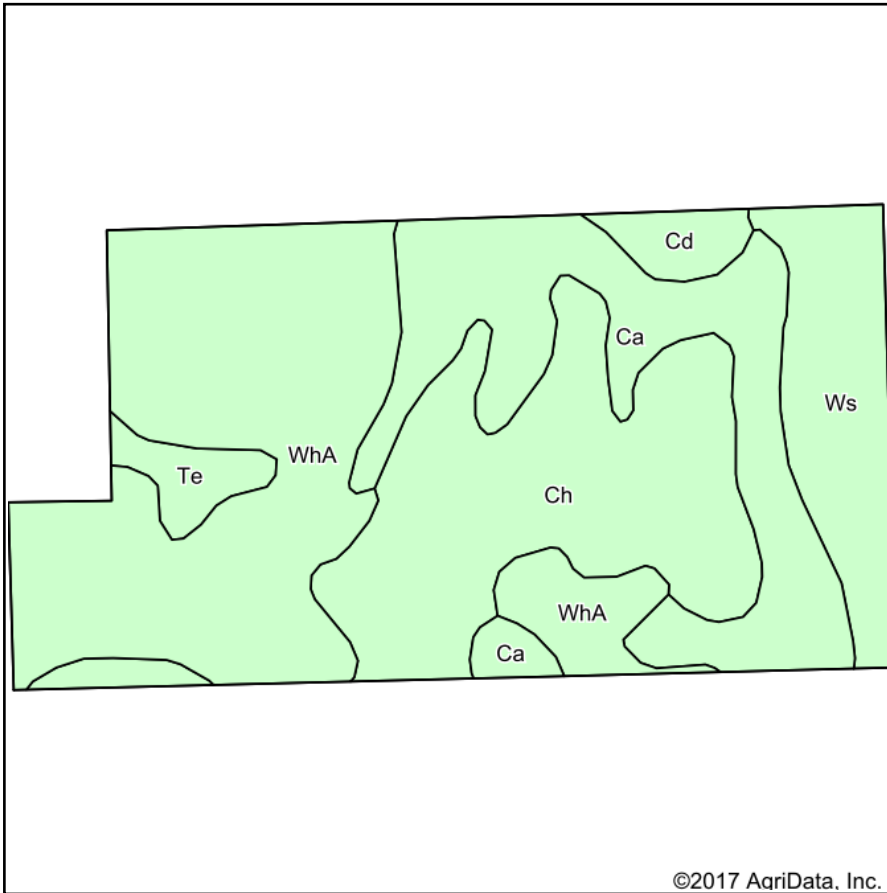
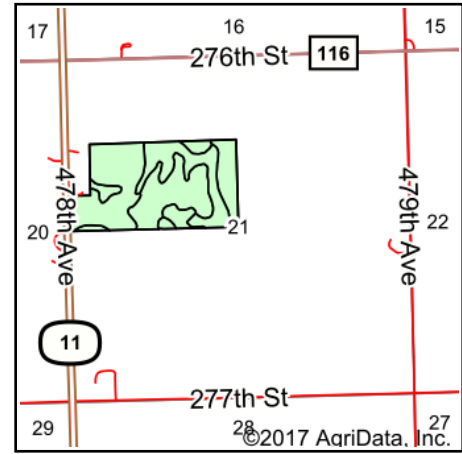


Soils Map



Soils data provided by USDA and NRCS.



State: **South Dakota**
 County: **Lincoln**
 Location: **21-99N-49W**
 Township: **Dayton**
 Acres: **74**
 Date: **12/28/2017**



Maps Provided By:



© AgriData, Inc. 2017

www.AgriDataInc.com



Area Symbol: SD083, Soil Area Version: 19

Code	Soil Description	Acres	Percent of field	Non-Irr Class *c	Productivity Index	Alfalfa hay	Barley	Corn	Soybeans	Spring wheat
WhA	Wentworth-Chancellor silty clay loams, 0 to 2 percent slopes	27.09	36.6%	Iw	88	4.1	51	98	37	36
Ch	Chancellor-Wakonda-Tetonka complex	19.54	26.4%	IIw	78	2.6	36	81	28	25
Ca	Chancellor-Tetonka complex, 0 to 2 percent slopes	15.98	21.6%	IIw	75					
Ws	Worthing silty clay loam, 0 to 1 percent slopes	7.96	10.8%	Vw	30					
Te	Tetonka silt loam, 0 to 2 percent slopes, frequently ponded	1.80	2.4%	IVw	59					
Cd	Chancellor-Viborg silty clay loams	1.63	2.2%	IIw	87	3.7	47	94	35	33
Weighted Average					75.6	2.3	29.2	59.3	21.7	20.5

*c: Using Capabilities Class Dominant Condition Aggregation Method

Soils data provided by USDA and NRCS.