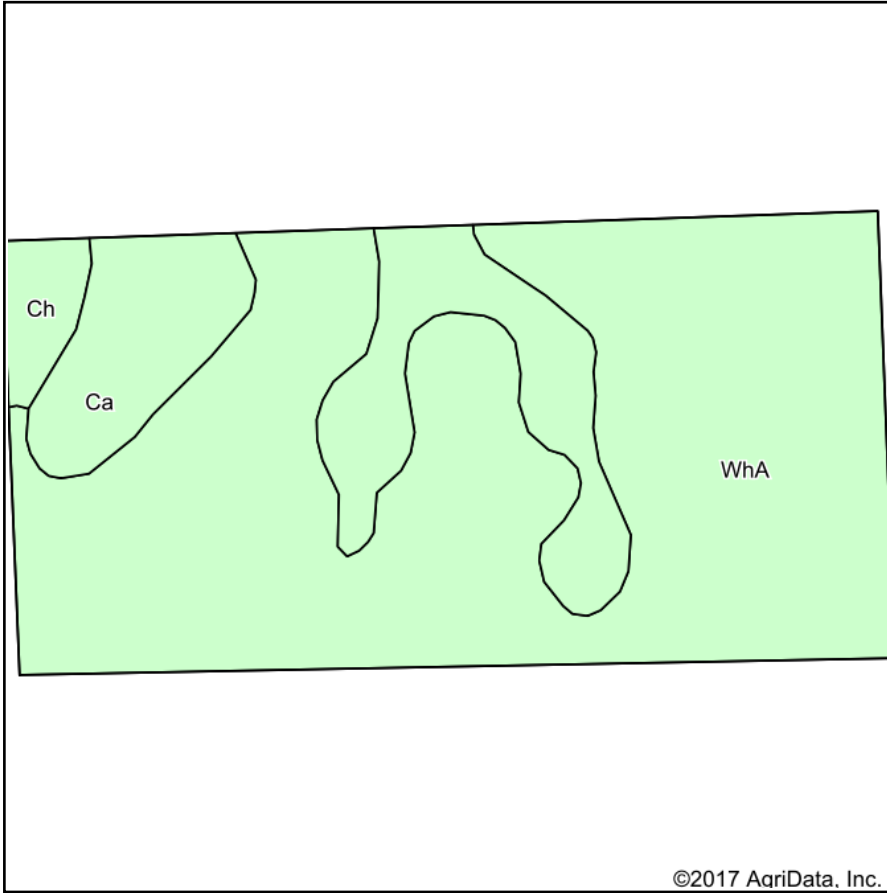
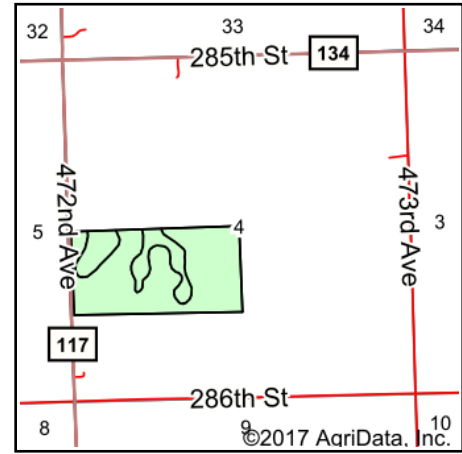


Soils Map



Soils data provided by USDA and NRCS.



State: **South Dakota**
 County: **Lincoln**
 Location: **4-97N-50W**
 Township: **Lincoln**
 Acres: **78.44**
 Date: **12/28/2017**



Maps Provided By:



© AgriData, Inc. 2017

www.AgriDataInc.com



Area Symbol: SD083, Soil Area Version: 19

Code	Soil Description	Acres	Percent of field	Non-Irr Class *c	Productivity Index	Alfalfa hay	Barley	Corn	Soybeans	Spring wheat
WhA	Wentworth-Chancellor silty clay loams, 0 to 2 percent slopes	60.26	76.8%	lw	88	4.1	51	98	37	36
Ca	Chancellor-Tetonka complex, 0 to 2 percent slopes	15.95	20.3%	llw	75					
Ch	Chancellor-Wakonda-Tetonka complex	2.23	2.8%	llw	78	2.6	36	81	28	25
Weighted Average					85.1	3.2	40.2	77.6	29.2	28.4

*c: Using Capabilities Class Dominant Condition Aggregation Method

Soils data provided by USDA and NRCS.