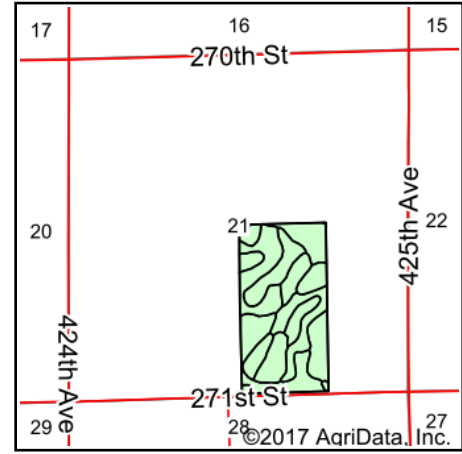
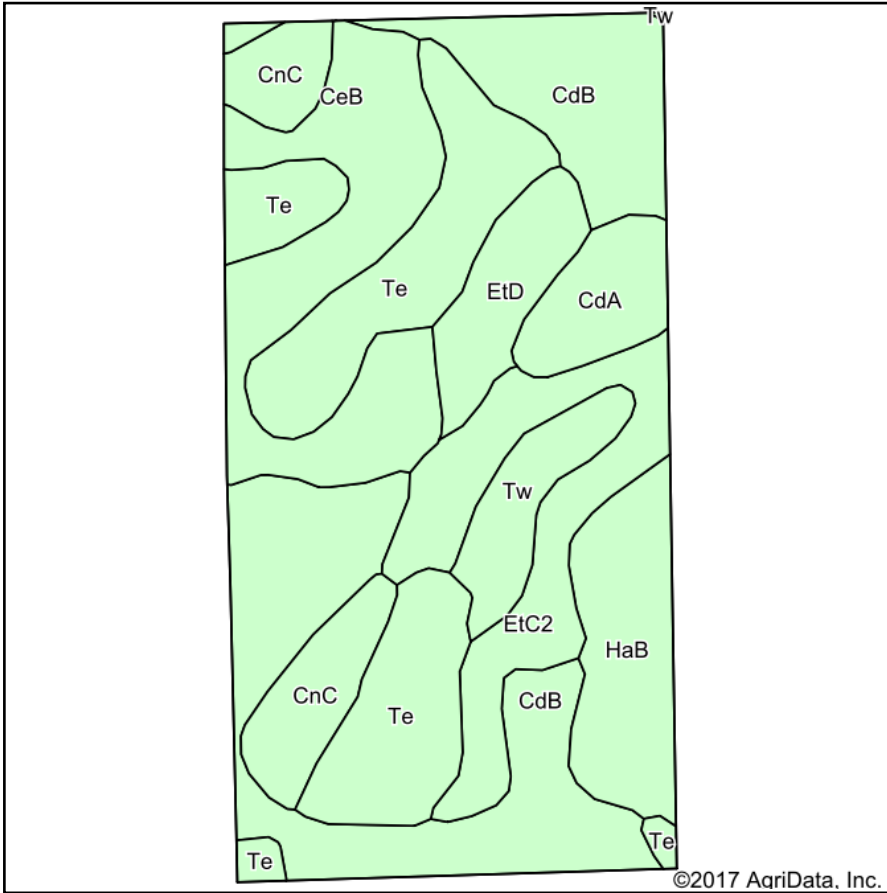


Soils Map

TRACT 2



State: **South Dakota**
 County: **Hutchinson**
 Location: **21-100N-58W**
 Township: **Clayton**
 Acres: **79.65**
 Date: **12/11/2017**



Soils data provided by USDA and NRCS.

Area Symbol: SD602, Soil Area Version: 19

Cod e	Soil Description	Acres	Percent of field	Non-Irr Class *c	Irr Class *c	Productivity Index	Alfalfa hay	Alfalfa hay Irrigated	Corn	Corn Irrigated	Soybeans	Soybeans Irrigated	Spring wheat
CdB	Clarno loam, 2 to 6 percent slopes	19.94	25.0%	Ile		82							
Te	Tetonka silt loam, 0 to 1 percent slopes	15.95	20.0%	IVw		56							
CeB	Clarno-Davison loams, 2 to 4 percent slopes	11.85	14.9%	Ile	IIle	79	3.1	5.2	72	125	27	32	
EtC2	Ethan-Betts loams, 6 to 9 percent slopes, eroded	9.27	11.6%	Vle		49							
HaB	Hand loam, 3 to 6 percent slopes	6.54	8.2%	Ile		79	3.1		75				27
CnC	Clarno-Ethan-Bonilla loams, 2 to 9 percent slopes	5.25	6.6%	IIle		69							
EtD	Ethan-Betts loams, 9 to 15 percent slopes	3.96	5.0%	Vle		30							
CdA	Clarno-Bonilla loams, 0 to 2 percent slopes	3.49	4.4%	IIc		88							
Tw	Tetonka and Whitewood silty clay loams	3.40	4.3%	IIw		74							
Weighted Average						68.7	0.7	0.8	16.9	18.6	4	4.8	2.2

*c: Using Capabilities Class Dominant Condition Aggregation Method

Soils data provided by USDA and NRCS.