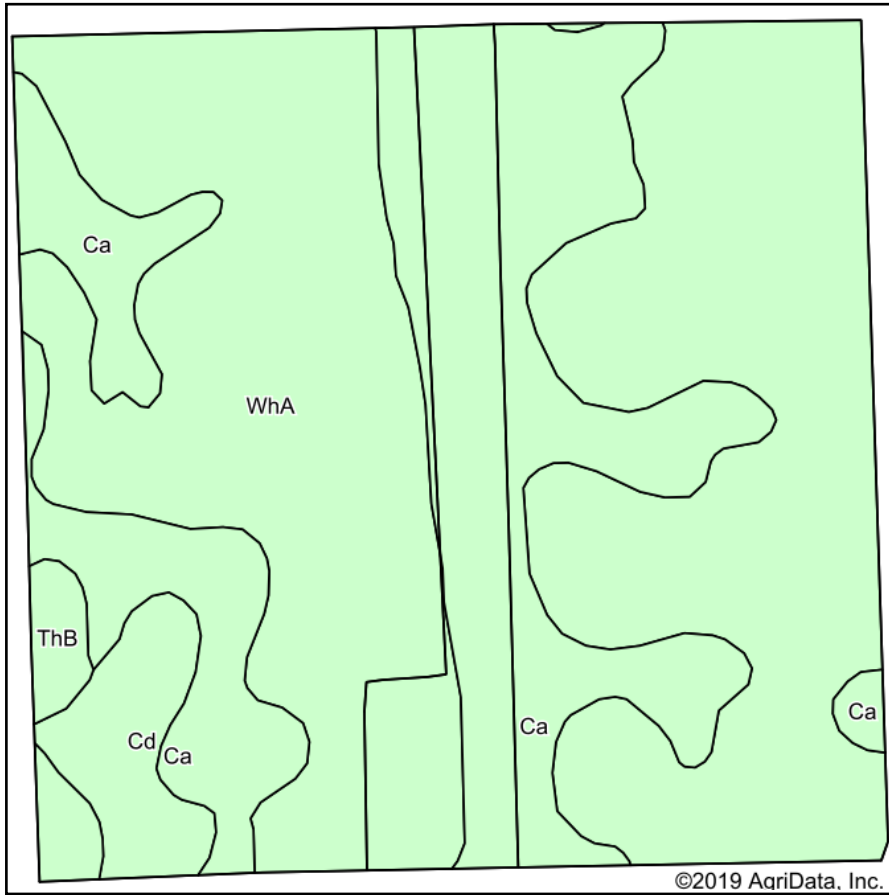
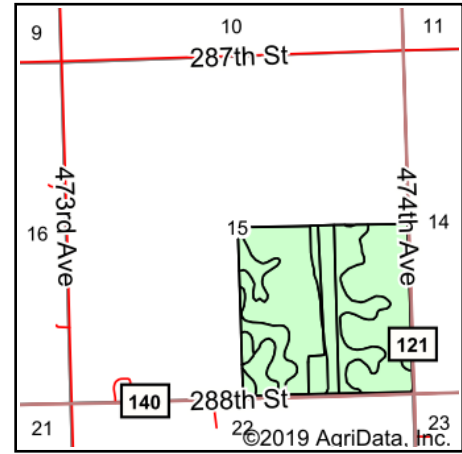


Soils Map



Soils data provided by USDA and NRCS.



State: **South Dakota**
 County: **Lincoln**
 Location: **15-97N-50W**
 Township: **Lincoln**
 Acres: **156.29**
 Date: **2/24/2019**



Maps Provided By:



© AgriData, Inc. 2019

www.AgriDataInc.com



Area Symbol: SD083, Soil Area Version: 20

Code	Soil Description	Acres	Percent of field	Non-Irr Class *c	Irr Class *c	Productivity Index	Alfalfa hay	Barley	Corn	Soybeans	Spring wheat	*n NCCPI Soybeans
WhA	Wentworth-Chancellor silty clay loams, 0 to 2 percent slopes	97.11	62.1%	Iw		88	4.1	51	98	37	36	54
Ca	Chancellor-Tetonka complex, 0 to 2 percent slopes	51.19	32.8%	IIw		75						35
Cd	Chancellor-Viborg silty clay loams	6.25	4.0%	IIw		87	3.7	47	94	35	33	44
ThB	Thurman loamy fine sand, terrace, 2 to 6 percent slopes	1.74	1.1%	IVe	IVe	46						28
Weighted Average						83.2	2.7	33.6	64.7	24.4	23.7	*n 47.1

*n: The aggregation method is "Weighted Average using major components"

*c: Using Capabilities Class Dominant Condition Aggregation Method

Soils data provided by USDA and NRCS.