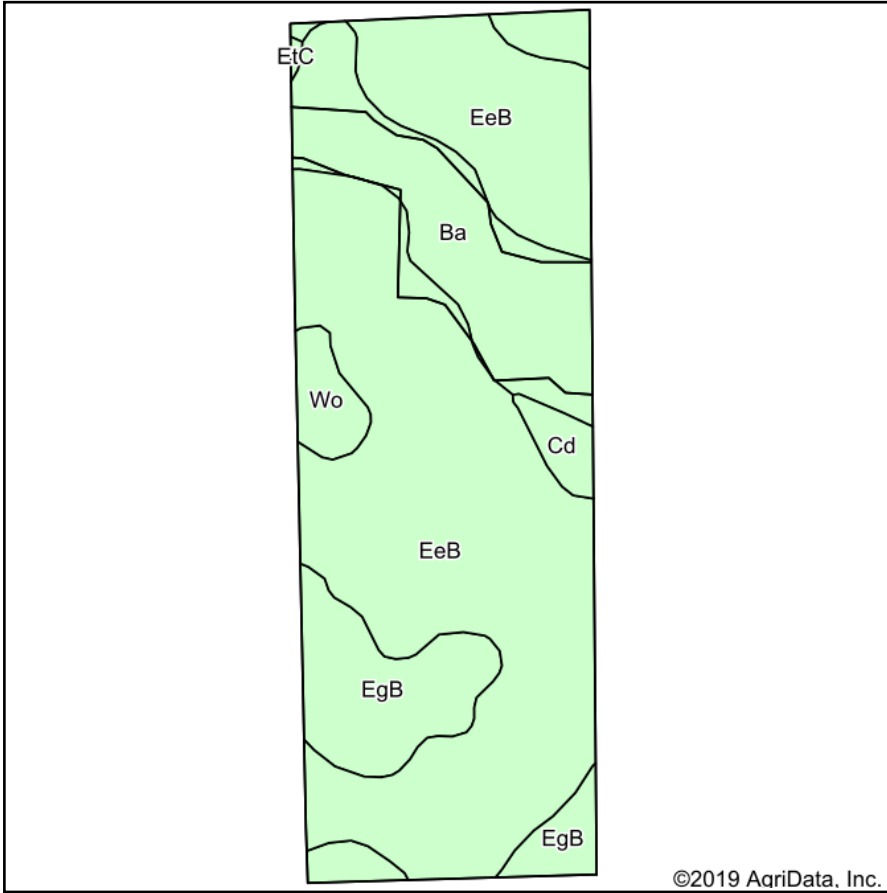
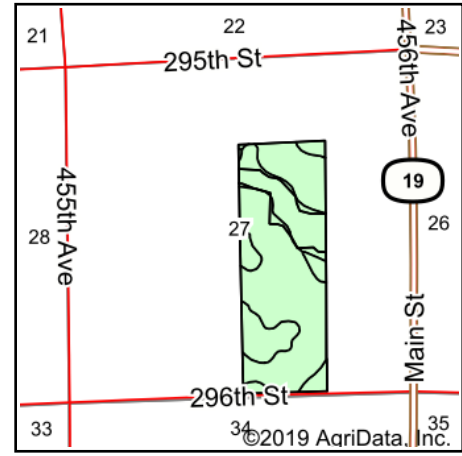


Soils Map



Soils data provided by USDA and NRCS.



State: **South Dakota**
 County: **Turner**
 Location: **27-96N-53W**
 Township: **Daneville**
 Acres: **118.13**
 Date: **4/2/2019**



Maps Provided By:



© AgriData, Inc. 2019

www.AgriDataInc.com



Area Symbol: SD125, Soil Area Version: 20

| Code | Soil Description | Acres | Percent of field | Non-Irr Class *c | Productivity Index | Alfalfa hay | Barley | Corn | Soybeans | Spring wheat | *n NCCPI Soybeans |
|-------------------------|-------------------------------------------------|-------|------------------|------------------|--------------------|-------------|-------------|-------------|-----------|--------------|-------------------|
| EeB | Egan-Ethan complex, 2 to 6 percent slopes | 76.20 | 64.5% | Ile | 77 | 4 | 47 | 77 | 29 | 32 | 60 |
| Ba | Baltic silty clay loam | 21.42 | 18.1% | Vw | 37 | | 5 | 29 | 10 | 4 | 2 |
| EgB | Egan-Wentworth complex, 2 to 6 percent slopes | 15.10 | 12.8% | Ile | 84 | | | | | | 69 |
| Wo | Worthing silty clay loam, 0 to 1 percent slopes | 3.16 | 2.7% | Vw | 30 | | | | | | 2 |
| Cd | Clamo silty clay | 2.08 | 1.8% | IVw | 62 | 0.6 | 21 | 60 | 23 | 14 | 26 |
| EtC | Ethan-Egan complex, 5 to 9 percent slopes | 0.17 | 0.1% | IVe | 61 | 3.4 | 38 | 60 | 22 | 26 | 58 |
| Weighted Average | | | | | 69.1 | 2.6 | 31.6 | 56.1 | 21 | 21.7 | *n 48.5 |

*n: The aggregation method is "Weighted Average using major components"

*c: Using Capabilities Class Dominant Condition Aggregation Method

Soils data provided by USDA and NRCS.