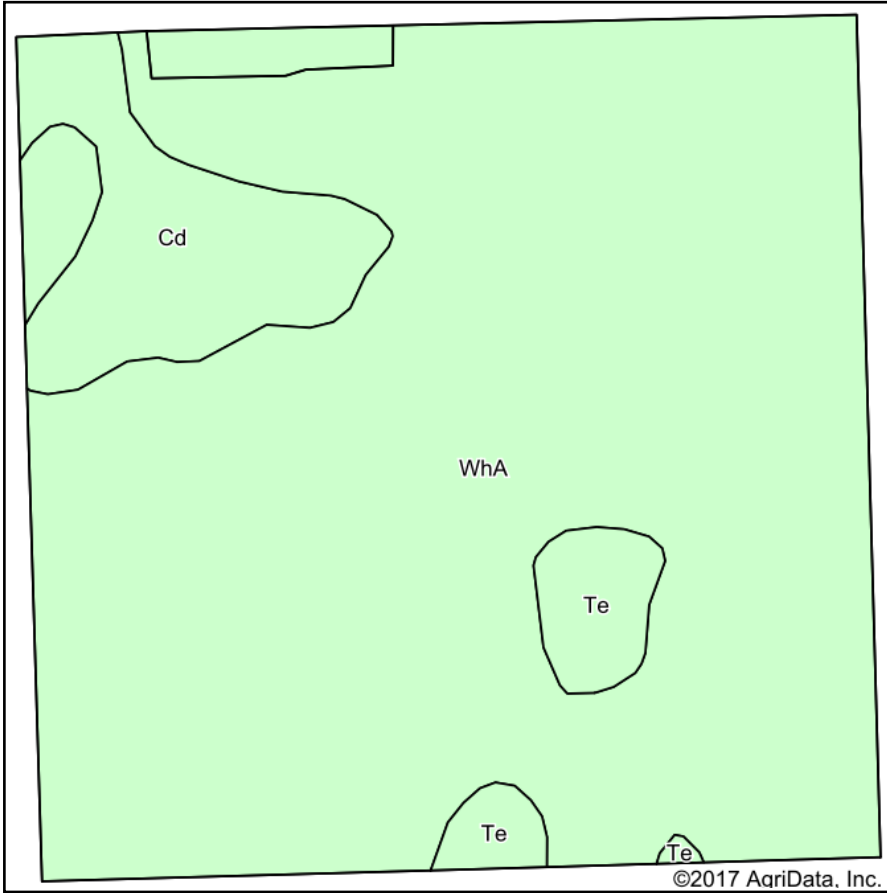
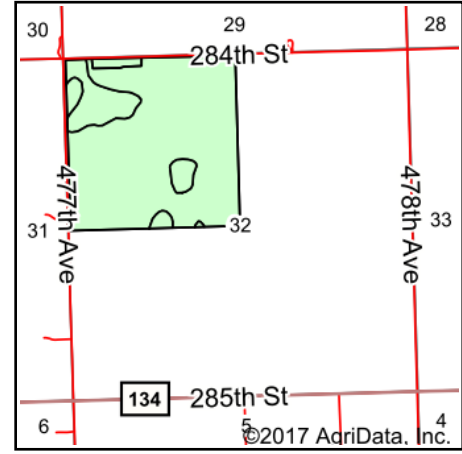


# Soils Map



Soils data provided by USDA and NRCS.



State: **South Dakota**  
 County: **Lincoln**  
 Location: **32-98N-49W**  
 Township: **Canton**  
 Acres: **157.59**  
 Date: **12/28/2017**



Maps Provided By:



© AgriData, Inc. 2017

www.AgriDataInc.com



## Area Symbol: SD083, Soil Area Version: 19

Code	Soil Description	Acres	Percent of field	Non-Irr Class *c	Productivity Index	Alfalfa hay	Barley	Corn	Soybeans	Spring wheat
WhA	Wentworth-Chancellor silty clay loams, 0 to 2 percent slopes	137.36	87.2%	Iw	88	4.1	51	98	37	36
Cd	Chancellor-Viborg silty clay loams	14.64	9.3%	IIw	87	3.7	47	94	35	33
Te	Tetonka silt loam, 0 to 2 percent slopes, frequently ponded	5.59	3.5%	IVw	59					
<b>Weighted Average</b>					<b>86.9</b>	<b>3.9</b>	<b>48.8</b>	<b>94.2</b>	<b>35.5</b>	<b>34.4</b>

\*c: Using Capabilities Class Dominant Condition Aggregation Method

Soils data provided by USDA and NRCS.